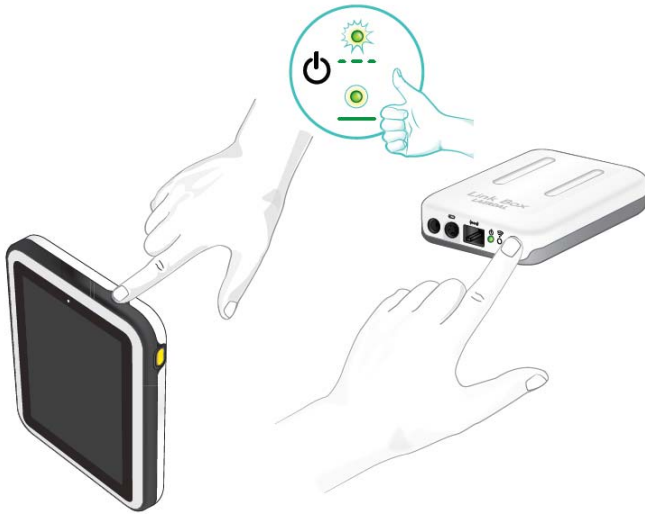


# SimPad Power Up Process



- Turn on both the Link Box and Simpad by pressing the ON button(\*) for at least half a second.
- Release the button when the LED(\*) starts blinking green.
- When the Link Box is ready, the ON light(\*) will turn steady green.

(\*) Are marked with 

Link Box

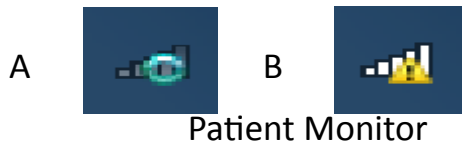


SimPad

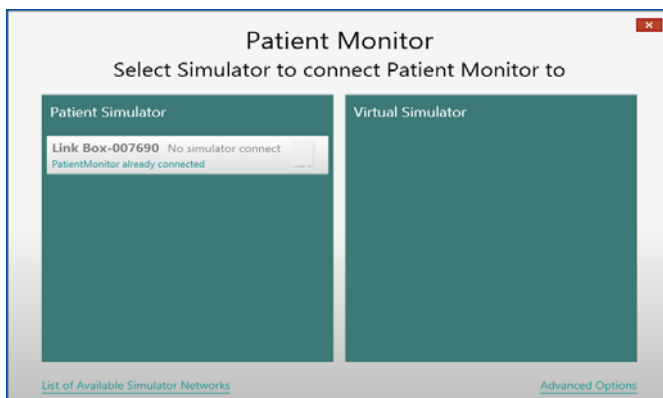


- SimPad communicates with the Link Box using WiFi.
- The Link Box indicates a connection to the SimPad with a blue light in the WiFi LED.
- A connection between the SimPad and Link Box is indicated in the upper right corner of SimPad's screen with a Manikin symbol.

## Laptop Wireless Connection Status



Patient Monitor



- Turn on the SimNewB laptop.
- The laptop will automatically attempt to connect with the Link Box and Simpad. (\*)
- Open the Patient Monitor software.
- A window with the Link Box listed under Patient Simulator will open and connect.

(\*) A—Connecting. B —Connected.