

NYSIM

THE CITY UNIVERSITY OF NEW YORK | NYU GROSSMAN SCHOOL OF MEDICINE

New York Simulation Center for the Health Sciences (NYSIM)

Standardized Patient Program Report

August 1, 2019 – July 31, 2020

Prepared by **Sondra Zabar, MD – Director**
NYU Grossman School of Medicine – NYSIM SP Program

NYSIM Standardized Patient Program Overarching Goals

Our goals are to:

1. Be an internationally recognized Standardized Patient Program that transforms health professions education
2. Implement best practices for excellence in operations and innovation for the delivery of Standardized Patient programs
3. Provide an effective modality for teaching and assessing communication skills
4. Provide an infrastructure for mentoring scholarly productivity of faculty
5. Provide a platform for interdepartmental and/or interinstitutional simulation-based educational programming

The Standardized Patient Program Team

The table of organization is below.

Changes to personnel of note are the following:

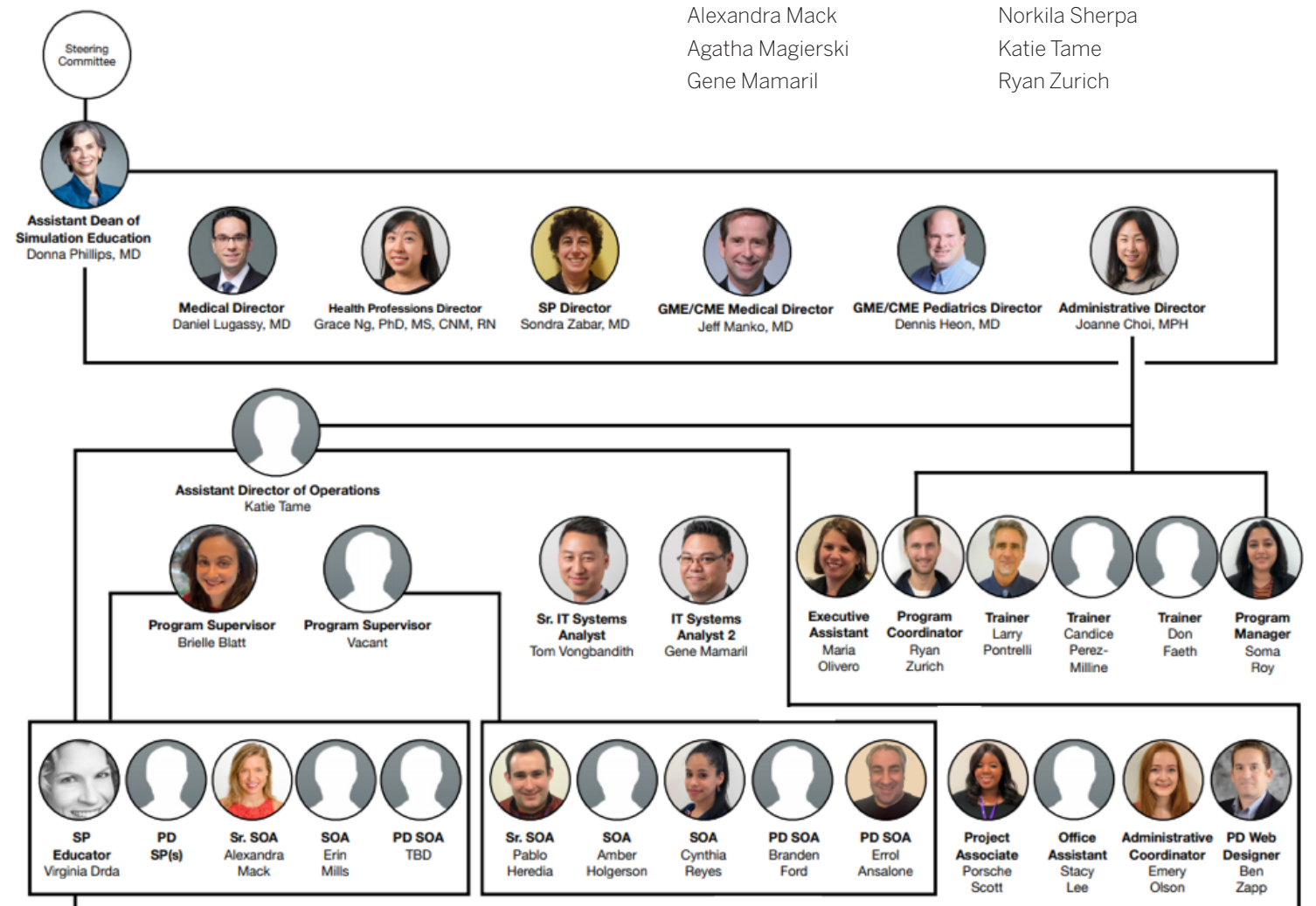
- Donna Phillips, MD is the Assistant Dean of Simulation Education for the NYU Grossman School of Medicine and joined NYSIM May 2020 to lead the simulation center
- Erin Mills joined as Simulation Operations Associate December 2019
- Katie Tame joined as Assistant Director of Operations in January 2020

Director of Standardized Patient Program:

Sondra Zabar, MD

Supporting Collaborators of the Standardized Patient Program:

Meg Anderson	Pauline McGlone
Brielle Blatt	Erin Mills
Joanne Choi	Emery Olson
Ruth Crowe, MD, PhD	Hetal Patel
Virginia Drda	Rebecca Pertab
Colleen Gillespie, PhD	Donna Phillips, MD
Alexandra Mack	Norkila Sherpa
Agatha Magierski	Katie Tame
Gene Mamaril	Ryan Zurich



Accomplishments

Operations

Our major focus this year was B-Line Implementation:

- Created a series of 14 mock OSCEs and designed common workflows for UME, GME and CME
- Transitioned UME's SP checklists (48), learner evaluations (50), and patient note assessments (50) from REDCap to B-Line
- Identified core "routine" learner reports and increased faculty independence reporting
- Reassessed Core item bank to standardized assessment across all SP programs
- Established sortable B-Line SP database to streamline recruitment
- Integrated full capability of the B-Line system with positive feedback from our stakeholders
- Redesigned SP Program infrastructure for smoother

Program Highlights

- The SP program hosted **128** programs, created **21** new programs, and engaged with **5192** learners.
- We had **16 programs switch to a hybrid in-person or remote OSCE** experience.
- Collaboratively, we published **10 papers** and presented **28 abstracts** at local, national, and international meetings at AAMC, Vizient, IMSH, SGIM, and subspecialties meetings.
- Our SP educator **recruited and trained 117 SPs** for projects beyond our NYU GSOM UME curriculum.
- **215 new interns** (to date N= 760) **participated in First Night on-Call: COVID Edition**, our experiential intern patient safety orientation. Transformed to address COVID in content and socially distance form.
- Near-graduation medical student performance-based assessment

COVID-19 – NYSIM Standardized Patient Program Pivot

The pandemic required the NYSIM Standardized Patient Team to pivot immediately to continue standardized patient activities. As a team we:

- Created a remote OSCE workgroup to develop protocols for designing and implementing remote and hybrid OSCEs across the continuum of learners
- Surveyed 150 SP's on their interest and experience of participating in remote OSCEs
- Initiated remote SP training including remote B-Line assessment
- Created remote Telemedicine training for clerkship students and was a member of the UME Telemedicine Workgroup
- Ensured all SP databases are up-to-date with contact

operations and service to stakeholders

- Instituted a new quality assurance process for SP performance using tools from B-Line
- Collaborated with IIME and established working data pipe line from B-Line to Education Data Warehouse

We invested in capital improvement of East Wing:

- A computer refresh, including a desktop and laptop located outside every East exam room, and new desktops inside each East exam room
- Clocks in all East rooms
- Overhaul of the announcement system
- Cameras and microphones updated for clarity

Night on Call captures all 13 EPA categories as part of assessment and gives individual student "readiness" reports.

- **Expanded model for Tele-Health education** in simulation center and virtual urgent care.
- **New GME programming** included: **Pediatrics family centered care collaboration with Sala Institute**, Anesthesiology POCUS, Inflammatory Bowel Disease 101 National Fellows Conference, Internal Medicine remote telemedicine, and planning for OB/GYN and EM health equity cases.
- **New CME programming** included: Emergency Medicine Faculty Buprenorphine GOSCE, **Coaching GOSCE for AMA Residency Innovation grant, EM Faculty telemedicine onboarding program** with announced SP via Virtual Urgent Care Platform

information, resumes, and headshots

- Mission critical Standardized Patient activity that needed to be performed in person were delivered safely using surgical masks, facial shields, hand hygiene and social distancing techniques

We believe the remote OSCE capabilities, due to Zoom and Webex technology merged with our B-Line software, create a new and expanded instructional design for individuals and groups to access standardized patient teaching modalities with little barriers to access. This modality will be utilized in a post-COVID environment to expand our capacity for performance-based assessment.

Remote OSCE Features

Location: Learners and instructors' remote locations, via Zoom

Clinical Decision-Making/Reasoning: Yes

Learner Task Performance: Virtual via verbal, photo, or video cues

Teamwork Skills: Yes

Communication Skills: Verbal and non-verbal

Recommended Learner Group Size: Varies based on design (4-6 GOSCE/ individual cases)

Learner Observation: Yes

Mannequin Control: N/A

Video Recording: Yes

Video Playback: During debriefing – No

After session complete: Yes

Learner Assessment: Zoom – No; B-Line, RedCap, or other select platforms – Yes

Documentation: Zoom – No

Remote OSCE Programs

Converted to Remote Programs

UME

- Medical Spanish Selective OSCE
- POM CS3 OSCE
- POM ICE OSCE
- POM II IPE TOSH Event

GME

- First Night on Call GOSCE
- IBD Fellows 101 Remote Conference
- IM Primary Care Residency EPIC ZOSCE
- Pediatrics Residency Sala Institute Family-Centered Communications OSCE
- Anesthesia Residency Board Prep ZOSCE & Conference
- IM Residency NYU Brooklyn Community Health Track - Geriatrics ZOSCE

CME

- IM Faculty Onboarding "Can We Talk" Telemedicine ZOSCE

New Remote Programs

GME

- EM Residency Transgender Health GOSTE
- Pediatrics Residency Telecommunications Grant ZOSCE
- Engagement in Longevity and Medicine (ELM): Research Assistants Zoom GOSCE

Programs that added Telehealth Cases

GME

- Hospice and Palliative Medicine Fellowship OSCE
- Neurology Residency Junior Professionalism OSCE

Remote Trainings of SPs

- First Night on Call GOSCE
- IM Faculty Onboarding "Can We Talk" Telemedicine ZOSCE
- Dental Residency Supplemental Professionalism OSCE
- UME Clerkship OSCEs
- POM CS3 OSCE
- POM ICE OSCE
- POM II IPE TOSH Event

Summary of SP Activities

	# of Programs	# of Learners	# of Sessions Completed	# of Sessions cancelled due to COVID-19
Undergraduate Medical Education (UME)				
New Programs	0	N/A	N/A	N/A
Enhanced Programs	0	N/A	N/A	N/A
Ongoing Programs	41	4045	196	62
TOTAL	41	4045	196	62
Graduate Medical Education (GME)				
New Programs	8	386	13	4
Enhanced Programs	7	68	11	6
Ongoing Programs	20	318	107	101
Programs Under Development	6	N/A	N/A	N/A
TOTAL	41	772	131	111
Continuing Medical Education (CME)				
New Programs	8	171	21	2
Enhanced Programs	2	54	9	6
Ongoing Programs	5	70	7	1
Programs Under Development	4	N/A	N/A	N/A
TOTAL	19	295	37	9
City University of New York (CUNY)				
New Programs	1	N/A	N/A	N/A
Enhanced Programs	0	N/A	N/A	N/A
Ongoing Programs	12	24	456	22
Programs Under Development	8	N/A	N/A	N/A
TOTAL	21	24	456	22
NYSIM Insitu SP Programs				
Ongoing Programs	2	10	90	9
TOTAL	2	10	90	9
NYSIM Offsite SP Programs				
Ongoing Programs	2	14	87	0
TOTAL	2	14	87	0
NYU Langone Health Programs				
New Programs	2	32	2	1
TOTAL	2	32	2	1
2019-2020 TOTAL	128	5192	999	214

Standardized Patient Training for GME, CME, and CUNY Programs by Virginia Drda, Standardized Patient Educator

Program Name	Faculty	# of Standardized Patients Trained
NYU GME		
Anesthesia Residency Board Prep OSCE	Emily Chanan, Erica Ash	8
Anesthesia Residency POCUS	Mitchell Lee	5
First Night on Call GOSCE	Sandy Zabar, Jeffrey Manko, Ian Fagan	8
IBD 101 First-Year Fellows Conference	Lisa Malter	14
Neurology Residency Junior Professionalism OSCE	Arielle Kurzweil	5
Neurology Residency Senior Professional OSCE	Arielle Kurzweil	4
Neurosurgery Residency Consent Evaluation OSCE	David Harter, Teresa Hidalgo	7
OB Residency TIPS	Stefanie Cardamone, Nicole Rosetti	3
CUNY		
Brooklyn College CASD 7313 Dysphagia Lab GOSCE	Sharon Beaumont-Bowman	8
Hunter College NUTR 748 Nutrition Assessment and Counseling OSCE	Victoria Fischer, Samantha Gallo	20
Queensborough Community College Nursing 202 Safe and Effective Nursing Care Level IV (Mental Health) Simulation SP Referral	Janet Franzese	1
School of Professional Studies Nursing 301 OSCE	Margaret Reilly, Jan Kaminsky	14
NYU CME		
EM Faculty ED-Initiated Buprenorphine GOSCE	Daniel Lugassy	7
Emergency Medicine Faculty Feedback OSCE	Kristin Carmody	9
NYULH Faculty Coaching GOSTE	Abigail Winkel	4
TOTAL		117

Standardized Participant Programs
The City University of New York (CUNY)

CUNY College	Course Name	Faculty	Coordinator
Brooklyn College	Brooklyn College CASD 7313 Dysphagia Lab GOSCE	Sharon Beaumont-Bowman	N/A
Brooklyn College	Brooklyn College Early Intervention Skills	Sonia Ortiz	N/A
The City College of New York	CSOM M2 Summative OSCE	Siobhan Hollander	Karen Adamo-Henry
The City College of New York	CSOM M3 OSCE	Siobhan Hollander	Karen Adamo-Henry
The City College of New York	CSOM M3 Summative OSCE	Siobhan Hollander	Karen Adamo-Henry
The City College of New York	CSOM M4 OSCE	Siobhan Hollander	Karen Adamo-Henry
Hunter College	Hunter College DPT Musculoskeletal Evaluation	Nicki Silberman, Susan Baybar	N/A
Hunter College	Hunter College DPT Outpatient Interview	Nicki Silberman, Susan Baybar	N/A
Hunter College	Hunter College NUTR 748 Nutrition Assessment and Counseling OSCE	Victoria Fischer, Samantha Gallo	N/A
New York City College of Technology	NYCCT Nursing 4010 - Disaster Preparedness OSCE	Michelle Gellar	N/A
CUNY School of Professional Studies	School of Professional Studies (SPS) Nursing 301 OSCE	Margaret Reilly, Jan Kaminsky	Czarina Valente
The City College of New York	CSOM M1 Endocrine OSCE	Siobhan Hollander	Karen Adamo-Henry
The City College of New York	CSOM M1 GI OSCE	Siobhan Hollander	Karen Adamo-Henry
The City College of New York	CSOM M1 Pulmonary OSCE	Siobhan Hollander	Karen Adamo-Henry
The City College of New York	CSOM M1 Renal OSCE	Siobhan Hollander	Karen Adamo-Henry
The City College of New York	CSOM M2 Neurology OSCE	Siobhan Hollander	Karen Adamo-Henry
The City College of New York	CSOM Physician Assistant OSCE	Jaclyn Churchill, Joseph Birgland	Olga Waters, Karen Adamo-Henry
Queensborough Community College	QCC Nursing 101 Safe and Effective Nursing Care Level I ZOSCE	Lorraine Cupelli	N/A
Queensborough Community College	QCC Nursing 101 Safe and Effective Nursing Care Level I ZOSCE	Susan Riekert	N/A
Queensborough Community College	QCC Nursing 202 Safe and Effective Nursing Care Level IV – SP Simulation Offsite	Janet Franzese	N/A
TOTAL PROGRAMS			21

NYU Grossman School of Medicine – Undergraduate Medical Education

Program Name	Faculty	Coordinator(s)	# of Sessions	# of Learners
Cardio ECHO US Workshop	Kira Melamud, Jacqueline Paulis	Carolyn Holmes, Lauren Eisner	1	104
Cardiovascular Seminar	Ruth Crowe	Agatha Magierski, Norkila Sherpa, Brielle Blatt	2	104
CCSE	Ruth Crowe	Brielle Blatt	3	130
GIB Simulation	Michael Poles, Ruth Crowe	N/A	4	104
Interclerkship Intensive I OSCE	Dennis Popeo, Ruth Crowe	Lauren Eisner, Brielle Blatt	0	104
Interclerkship Intensive II OSCE	Dennis Popeo, Ruth Crowe	Lauren Eisner, Brielle Blatt	1	104
Integrated Clinical Skills Practice Session	Ruth Crowe	Brielle Blatt	2	2
MDBM Abdomen Workshop	Jacqueline Paulis, Ruth Crowe	Lauren Eisner	1	104
MD-PhD Orientation OSCE	Ruth Crowe	Brielle Blatt	1	10
Night on Call	Ruth Crowe	Brielle Blatt, Pauline McGlone	2	120
Ambulatory Care Clerkship OSCE	Michael Tanner, Ruth Crowe	George Mattola, Pauline McGlone	12	104
CNS Clerkship Brain Death Simulation	Jonathan Howard, Ruth Crowe	Christina Cronin, Pauline McGlone	8	104
CNS Clerkship OSCE	Jonathan Howard, Ruth Crowe	Christina Cronin, Pauline McGlone	8	104
Medicine Clerkship OSCE	Michael LoCurcio, Ruth Crowe	Karina Soto, Pauline McGlone	8	104
OBG Clerkship OSCE	Fabio Ferrari, Ruth Crowe	Luz-Maria Villa, Hetal Patel	8	104
OBG Clerkship GTA Session	Fabio Ferrari, Ruth Crowe	Luz-Maria Villa, Hetal Patel	15	104
Pediatrics Clerkship OSCE	Cynthia Osman, Chanda Bradshaw, Ruth Crowe	Lakesha Baker, Hetal Patel	8	104
Psychiatry Clerkship Simulation	Victoria Dinsell, Ruth Crowe	Jeffrey Sanchez, Pauline McGlone	8	104
Psychiatry Clerkship OSCE	Victoria Dinsell, Ruth Crowe	Jeffrey Sanchez, Pauline McGlone	8	104
Surgery Clerkship OSCE	Ann Lee, Ruth Crowe	Lydia Cassard, Hetal Patel	8	104
Emergency Medicine Ultrasound Elective OSCE	Elizabeth Yetter, Jacqueline Paulis, Ruth Crowe	Lauren Eisner	2	14
Global Health Selective - Humanitarian Relief & Disaster Management	Sarah Hochman, Omar El Shahawy, Ruth Crowe	Julia Dickhaus	2	20
Health Disparities Selective OSCE	Richard Greene, Ruth Crowe	Tiffany Cook	1	4
Medical Mandarin Selective OSCE	Chenyang Zhan, Ruth Crowe	Elizabeth Robinson	4	21
Medical Spanish Selective OSCE	Laura Malaga-Dieguez, Nuria Mendoza, Ruth Crowe	Elizabeth Robinson	14	30
Radiology Selective Ultrasound Workshop	Jeffrey Alpert, Ruth Crowe	Evelyn Espinoza	11	49
Telehealth Elective OSCE	Molly Poag	Erica Torres	1	1
Care of the Chronically Ill Child Selective OSCE	Ruth Crowe	Elizabeth Robinson	1	6
POM I Clinical Skills ICE OSCE	Ruth Crowe	Brielle Blatt, Agatha Magierski, Norkila Sherpa	3	104
POM I Clinical Skills I OSCE	Ruth Crowe	Brielle Blatt, Agatha Magierski, Norkila Sherpa	6	104
POM Clinical Skills I Extra Practice OSCE	Ruth Crowe	Brielle Blatt, Agatha Magierski, Norkila Sherpa	2	50
POM I Clinical Skills II OSCE	Ruth Crowe	Brielle Blatt, Agatha Magierski, Norkila Sherpa	5	104
POM I Clinical Skills III OSCE	Ruth Crowe	Brielle Blatt, Agatha Magierski, Norkila Sherpa	6	104
POM I Clinical Skills IV OSCE	Ruth Crowe	Brielle Blatt, Agatha Magierski, Norkila Sherpa	4	104
POM II DV OSCE	Ruth Crowe	Brielle Blatt, Agatha Magierski, Norkila Sherpa	3	104
POM GTA GU Session	Ruth Crowe	Brielle Blatt, Agatha Magierski, Norkila Sherpa	7	104
POM II Final OSCE	Ruth Crowe	Brielle Blatt, Agatha Magierski, Norkila Sherpa	4	104
POM Lecture	Ruth Crowe	Brielle Blatt, Agatha Magierski, Norkila Sherpa	2	104
POM Pain OSCE	Ruth Crowe	Brielle Blatt, Agatha Magierski, Norkila Sherpa	4	104
POM II Clinical Skills Physical Exam Review	Ruth Crowe	Brielle Blatt, Agatha Magierski, Norkila Sherpa	3	104
POM II IPE TOSH Event	Ruth Crowe	Brielle Blatt	3	780
TOTAL			196	4045

Graduate Medical Education Standardized Patient Program by Residency/Fellowship

Program(s)	Faculty	Coordinator(s)	Status	# of Sessions	# of Learners
Dentistry Residency Supplemental Professionalism OSCE	Jeffrey Manko	N/A	Enhanced	1	1
First Night on Call GOSCE COVID EDITION	Sandy Zabar, Jeffrey Manko, Ian Fagan	Emery Olson	New	2	205
Emergency Medicine Residency					
EM Residency Multi-Modal Transgender Care OSCE	Soma Pathak	Andrea Chan	In Development	0	N/A
Internal Medicine Residency					
USP	Sondra Zabar	Harriet Fisher	Ongoing	82	82
IM Residency Brooklyn Community Health Track Annual OSCE	Rachael Winchester-Hayes	Davis Boardman	New	1	13
IM Residency Brooklyn Community Health Track Essentials 1.0 OSCE	Rachael Winchester-Hayes	Davis Boardman	New	2	10
IM Residency Brooklyn Community Health Track Gender Health OSCE	Rachael Winchester-Hayes	Davis Boardman	Enhanced	3	20
IM Residency Primary Care Track Annual OSCE/ Zoom OSCE Hybrid	Sondra Zabar	Michelle Torres-Avelar	New	1	37
IM Residency Primary Care Track Essentials 1.0 OSCE	Richard Greene	Michelle Torres-Avelar	Enhanced	2	10
IM Residency Primary Care Track Gender Health OSCE	Meredith Lynn	Michelle Torres-Avelar	Ongoing	2	10
IM Residency Primary Care Track Geriatric Medicine GOSCE	Hadas Reich	Michelle Torres-Avelar	Ongoing	1	10
IM Residency Primary Care Track MSK OSCE	Richard Greene	Michelle Torres-Avelar	New	2	5
IM Residency Primary Care Track OBG GTA Session	Hadas Reich	Michelle Torres-Avelar	Ongoing	2	10
IM Residency Categorical Track Chief Resident Development OSTE	Margaret Horlick	Cartiana Charles	Ongoing	2	26
IM Residency Categorical Track PGY 1 Advanced Communication Skills GOSTE	Barbara Porter	Cartiana Charles	Ongoing	3	38
IM Residency Categorical Track PGY 1 OSCE	Margaret Horlick	Cartiana Charles	Enhanced	3	21
IM Residency Categorical Track PGY 2 OSCE	Margaret Horlick	Cartiana Charles	Enhanced	0	N/A
Hospice and Palliative Care Fellowship					
Hospice and Palliative Care Fellowship Extubation Simulation	Megan Rau, Susan Cohen	Mimi Merkin	Ongoing	0	N/A
Hospice and Palliative Care Fellowship OSCE	Susan Cohen	Mimi Merkin	Ongoing	1	5
IBD Fellowship					
IBD 101 First-Year Fellows Conference	Lisa Malter	Danielle Seabron	New	1	60
IBD Fellows OSCE	Lisa Malter	Danielle Seabron	Ongoing	0	N/A
Neurosurgery Residency					
Neurosurgery Residency Consent Evaluation OSCE	David Harter, Teresa Hidalgo	Ivonne Monterrey	Ongoing	2	21
Neurology Residency					
Neurology Residency Junior Professionalism OSCE	Arielle Kurzweil	Eridiz Diaz	Ongoing	2	17
Neurology Residency PGY 1 Brain Death Simulation	Arielle Kurzweil	Eridiz Diaz	Ongoing	2	12
Neurology Residency Senior Professional OSCE	Arielle Kurzweil	Eridiz Diaz	Ongoing	2	24
Neurology Residency Telestroke OSCE	Arielle Kurzweil, Koto Ishida	Eridiz Diaz	Ongoing	0	N/A
Orthopedic Surgery Residency					
Orthopedic Surgery Residency Bootcamp OSCE	Mara Karamitopoulos	Genesis Pineda	Ongoing	1	14
Pediatrics Residency					
Pediatric Residency - Sala Institute Family-Centered Communication OSCE	Heather Howell, Purnahamsi Desai	Meaghan McGrath	New	2	40
Pediatric Residency Telecommunications Grant ZOSCE	Jonathan Lebowitz, Heather Howell		In Development	N/A	N/A

Graduate Medical Education Standardized Patient Program by Residency/Fellowship (continued)

Program(s)	Faculty	Coordinator(s)	Status	# of Sessions	# of Learners
Surgery Residency					
Surgery Residency Mock Oral Boards	Russel Berman	Vivian Stellakis	Ongoing	2	16
Surgery Residency SPICE OSCE	Mark Hochberg	Vivian Stellakis	Ongoing	0*	N/A*
Anesthesiology Residency					
Anesthesia Residency Board Prep OSCE	Emily Chanan, Erica Ash	Amy Pazmino, Susan Firestone	Ongoing	1	8
Anesthesia Residency Board Prep Teleconference	Emily Chanan, Michael Wajda, Mitchell Lee	N/A	In Development	N/A	N/A
Anesthesia Residency POCUS	Mitchell Lee	Juan Carucci	New	2	16
OBGYN Residency					
OB Residency TIPS	Stefanie Cardamone, Nicole Rosetti	Olga Smuklavsky	Enhanced	0*	N/A*
OB Residency Transgender Care OSCE	Stefanie Cardamone	Olga Smuklavsky, Tiffany Cooke	In Development	N/A	N/A
OB Residency Transgender Grant OSCE	Gwendolyn Quinn	N/A	In Development	N/A	N/A
TOTAL				131	772

Continuing Medical Education Standardized Patient Program

Program(s)	Faculty	Administrator(s)	Status	# of Sessions	# of Learners
Clinical Investigation Psychiatry Positive Priming OSCE	Alan Schlechter	N/A	In Development	N/A	N/A
NYULH Faculty Coaching GOSTE	Abigail Winkel	Lisa Ng-Zhao	New	1	14
EMLDP	Jeffrey Manko	N/A	Ongoing	0	N/A*
Department of Medicine / Internal Medicine					
DGIMCI Faculty Onboarding OSCE	Sondra Zabar	Mara McCrickard	New-Telemedicine	4	37
DOM Pulmonary Faculty OSCE	Mark Adelman	Katie Schliessman	Ongoing	1	10
E4E GOSTE	Anne Dembitzer	Penelope Lusk	Enhanced	3	30
E4E Workshops 1&2	Anne Dembitzer	Penelope Lusk	Enhanced	6	24
Geriatric Medicine Faculty Development GOSCE	Nina Blachman	Mimi Merkin	New	1	5
EM Virtual Telehealth OSCE	Sondra Zabar	Heather Levitt	New	9	21
NY Point of Care Ultrasound CME Course (POCUS)	Michael Janjigian	Deborah Cooke, Marla Hymes	Ongoing	2	30
P4P: POCUS for Pulmonologists	Deepak Pradhan	N/A	Ongoing	3	15
Emergency Medicine					
EM Faculty Development Interviewing Skills ZOSCE	Kristin Carmody	N/A	In Development	N/A	N/A
EM Faculty ED-Initiated Buprenorphine GOSCE	Daniel Lugassy	N/A	New	3	51
EM Faculty Transgender Emergency Department VR Simulation	Shannon McNamara	Tiffany Cooke	New	1	N/A
Emergency Medicine Faculty Feedback OSCE	Kristin Carmody	Megan Clyne	Ongoing	1	15
Pediatrics					
NICU Ultrasound Course	Sweta Bhargava	N/A	New	1	3
Pediatrics Faculty Development Workshop and GOSTE	Cynthia Osman	Lakesha Baker	New	1	40
Neurology					
Neurology Faculty Development OSCE	Cen Zhang	Eridiz Diaz	In Development	N/A	N/A
Ophthalmology					
Ophthalmology Faculty Feedback Development OSCE	Eleanore Him	Katina During	In Development	N/A	N/A
TOTAL				37	295

* Cancelled due to COVID-19

NYSIM Insitu SP Programs

Program Name	Faculty	Coordinator	Organization	Status	# of Sessions	# of Learners
PPH & Shoulder Dystocia Combo - NYU Brooklyn	Christina Flores, Marlee Loperena	Maryum Sheikh	NYU Langone Health - Brooklyn	Ongoing	7	60
PPH & Shoulder Dystocia Combo - NYU Tisch	Christine Proudfit, Amy Imossi, Nicole Rook, Jerome La	Olga Smuklavsky	NYU Langone Health - Tisch	Ongoing	3	30
TOTAL					10	90

NYSIM Offsite SP Programs

Program Name	Faculty	Coordinator	Organization	Status	# of Sessions	# of Learners
EM Guest Lecture Talks - August 2019	Joanne Kuntz, Julie Cooper, Eric Isaacs, Lillian Emler	Allison Cuthel	NYU Continuing Medical Education	Ongoing	3	16
EM Guest Lecture Talks - January 2020	Erin Salvador, Joel Bauman	Allison Cuthel	NYU Continuing Medical Education	Ongoing	6	36
EM Guest Lecture Talks - February 2020	Kimberly Bloom-Feshback, Jay Horton	Allison Cuthel	NYU Continuing Medical Education	Ongoing	2	17
Ultrasound at VA	Harald Sauthoff	Deborah Cooke	NYU Graduate Medical Education	Ongoing	3	18
TOTAL					14	87

NYU Langone Health Programs

Program Name	Faculty	Coordinator	Status	# of Sessions	# of Learners
Engagement in Longevity and Medicine (ELM): Research Assistants GOSCE for Clinical Trials	Joshua Chodosh, Sondra Zabar	Harriet Fisher	New	1	9
NYULH Faculty Coaching GOSTE	Abigail Winkel	Lisa Ng-Zhao	New	1	14
TOTAL				2	32

FY21 SP Programmatic Goals

1. Create a sustainable infrastructure and model for remote and hybrid performance-based assessment
2. Diversify Standardized Patient Per Diem Employees in all demographic areas including but not limited to ethnicity, gender identification and age
3. Collaborate with Educational Data Warehouse and educational leadership to create reliable and actionable performance-based reports and dashboard

Grant Collaborations

- American Board of Psychiatry and Neurology Faculty Innovation In Education: Development of Communication GOSCE (Cen Zhang & Arielle Kurzweil)
- NIH/NIS Engagement in Longevity and Medicine (ELM): Research Assistants GOSCE for Clinical Trials (Joshua Chodosh & Sondra Zabar)
- AMA Reimagining Residency Faculty Coaching GOSTE (Abigail Winkel & Sondra Zabar)
- Regional (NY/NJ) Association for Pediatric Program Directors Telemedicine Grant - (Heather Howell & Jonathan Rosenberg)
- CUNY Queensborough Community College Nursing 101 Fundamentals ZOSCE Perkins Grant (in development) (Lorraine Cupelli)

National Presentations

- Buprenorphine Faculty Development OSCE as Innovation SAEM (Daniel Lugassy)
- Crafting a Safer Case: Practices to Reduce Content Triggers and Support SPs (Authors: Virginia Drda and Amy Lorion)
- The Art of Healing: A Narrative Medicine Approach to SP (and SP Educator) Self-Care, Authors: (Tony Errichetti and Virginia Drda)
- Virtual Urgent Care Announced Standardized Patient Training at SGIM and innovation SAEM (Dan Sartori and Veraj Lakdawala)
- 2020 Top innovation Award American Thoracic Society: SIMplifying Palliative Extubations: A Two-Part Interdisciplinary OSCE in a Simulation Center to Assess Entrustable Professional Activities (Mark H. Adelman, Megan E. Rau, Brian Kaufman, Joseph Lowy and Susan E. Cohen)
- The learner's perception of the transition to residency: A qualitative study of new interns' experiences NYUGSOM Medical Education Day 2019 (Lucy M. Chang, Kinga Eliaz, Danielle Cacciatore and Abigail Ford Winkel)
- Awarded Best Graduate Medical Education Research Poster
- First Night On Call, Night on Call Experiential Onboarding by Drs. Elisa and Zabar and team
- Program on Transitioning Projects also presented at AAMC, ASE, SGIM

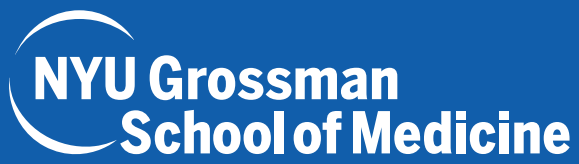
Publications

1. Valentine, D; Kurzweil, A; Zabar, S; Lewis, A. Objective Structured Clinical Exams (OSCE) are a feasible method of teaching how to discuss a nonepileptic seizure diagnosis. *Epilepsy & behavior*. 2019 100(Pt A):106526.
2. Sartori, Daniel J; Olsen, Sonja; Weinshel, Elizabeth; Zabar, Sondra R. Preparing trainees for telemedicine: a virtual OSCE pilot. *Medical education*. 2019;53(5):517-518.
3. Zabar S, Hanley K, Wilhite J, Altshuler L, Kalet A, Gillespie C. In the room where it happens: Do physicians need feedback on their real-world communication skills? *BMJ Quality & Safety*. Published online 2019 Nov. doi: 10.1136/bmjqs-2019-010384.
4. Marte, Anthony; Strauss, Eric; Phillips, Donna P. Patient Safety Room Assessing Orthopedic Surgery Interns' Abilities to Identify Patient Safety Hazards. *Bulletin of the Hospital for Joint Diseases*. 2019;77(2):122-127.
5. Kurzweil, Arielle M; Lewis, Ariane; Plening, Perrin; Rostanski, Sara K; Nelson, Aaron; Zhang, Cen; Zabar, Sondra; Ishida, Koto; Balcer, Laura J; Galetta, Steven L. Education Research: Teaching and assessing communication and professionalism in neurology residency with simulation. *Neurology*. 2020;94(5):229-232.
6. Papademetriou, Marianna; Perrault, Gabriel; Pitman, Max; Gillespie, Colleen; Zabar, Sondra; Weinshel, Elizabeth; Williams, Renee. Subtle skills: Using objective structured clinical examinations to assess gastroenterology fellow performance in system based practice milestones. *World journal of gastroenterology : WJG*. 2020;26(11):1221-1230.
7. Chang LY, Eliaz KL, Cacciatore DT, Winkel AF. The Transition From Medical Student to Resident: A Qualitative Study of New Residents' Perspectives. *Academic Medicine*. 2020 Apr 28.
8. Lawrence K, Hanley K, Adams J, Sartori D, Greene R, Zabar S. Building Telemedicine Capacity for Trainees During the Novel Coronavirus Outbreak: a Case Study and Lessons Learned. *J Gen Intern Med*. 2020 Sep;35(9):2675-2679. doi: 10.1007/s11606-020-05979-9. Epub 2020 Jul 8.
9. Stainman R, Lewis A, Nelson A, Zabar S, Kurzweil A. Identifying and Addressing Struggling Colleagues in the Era of Physician Burnout. *Neurology*. 2020 Aug 11:10.1212/WNL.0000000000010601. doi: 10.1212/WNL.0000000000010601.
10. Fisher H, Re C, Wilhite J, Hanley K, Altshuler L, Schmidtburger J, Gagliardi M, Zabar S. A Novel Method of Assessing Clinical Preparedness for COVID-19 and Other Disasters. *Int J Qual Health Care*. 2020 Sep 30:mzaa116. doi: 10.1093/intqhc/mzaa116. Online ahead of print.

Abstracts

1. Zabar, S, Phillips D, Manko J, Buckvar-Keltz L, Ng G, Fagan I, Cho I, Mack A, Eliaz K, Abersone I, Kalet A, Riles T. First Night-on Call (FNOC): Establishing a Community of Practice and Culture of Patient Safety for Incoming Interns. *Subway Summit 2019*.
2. Famiglietti HS, Phillips D, Howell H, Goonan M, Coble C, Zabar S. SIMULATED FIRST NIGHT-ONCALL (FNOC): ESTABLISHING COMMUNITY AND A CULTURE OF PATIENT SAFETY FOR INCOMING PEDIATRIC INTERNS. *Academic Pediatrics*. 2019 Aug 1;19(6):e44.
3. Levine, I., Zabar, S., Weinshel, E., Gillespie, C. and Malter, L., 2018. 'An Ounce of Prevention Is Worth a Pound of Cure': Using an Objective Structured Clinical Examination to Assess Delivery of Preventative Care in IBD: 592. *American Journal of Gastroenterology*, 113, p.S339.
4. Lopatin, S; Zabar, S; Weinshel, E; Gillespie, C; Malter, L. 'The use of an observed structured clinical examination to teach communication skills surrounding therapeutic drug monitoring'. *American journal of gastroenterology*. 2019 Conference:(2018):S21-
5. Gillespie C, Cahan E, Hanley K, Altshuler L, Wallach A, Porter B, Zabar S. Are Residents' Test Utilization Patterns Associated With Communication Skills and Patient Centeredness? Poster presented at NYU Langone Health's Fourth Annual Medical Education Innovations & Scholarship Day. November 20, 2019.
6. Cahan E, Hanley K, Wallach A, Porter B, Altshuler L, Zabar S, Gillespie C. Count Your Pennies: Costs of Medical Resident Deviation from Clinical Practice Guidelines In Use of Testing Across Three Unannounced Standardized Patient Cases. Poster presented at NYU Langone Health's Fourth Annual Medical Education Innovations & Scholarship Day. November 20, 2019.
7. Lugassy D, McCormack R, Shin S, DiSalvo P, Zabar S. Demystifying & Destigmatizing Emergency Department Initiated Buprenorphine for Opioid Use Disorder. Poster presented at NYU Langone Health's Fourth Annual Medical Education Innovations & Scholarship Day. November 20, 2019.
8. Mari A, Crowe R, Hanley K, Apicello D, Sherpa N, Altshuler L, Zabar S, Kalet A, Gillespie C. Development of Communication Skills Across the UME – GME Continuum. Poster presented at NYU Langone Health's Fourth Annual Medical Education Innovations & Scholarship Day. November 20, 2019.
9. Hardowar K, Altshuler L, Gillespie C, Wilhite J, Fisher H, Chaudhary S, Hanley K, Zabar S. Does Training Matter? Attending Physicians' Core Clinical Skills Do Not Appear to Be Any Better Than Those of Their Residents. Poster presented at NYU Langone Health's Fourth Annual Medical Education Innovations & Scholarship Day. November 20, 2019.

10. Zabar S, Phillips D, Manko J, Buckvar-Keltz L, Ng G, Fagan I, Cho I, Mack A, Elias K, Abersone I, Kalet A, Riles T. First Night-on Call (FNOC): Establishing a Community of Practice and Culture of Patient Safety for Incoming Interns. Poster presented at NYU Langone Health's Fourth Annual Medical Education Innovations & Scholarship Day. November 20, 2019.
11. Stainman R, Lewis A, Nelson A, Zabar S, Kurzweil A. Identifying and Addressing Impaired Colleagues In the Era of Physician Burnout. Poster presented at NYU Langone Health's Fourth Annual Medical Education Innovations & Scholarship Day. November 20, 2019.
12. Valentine D, Kurzweil A, Zabar S, Lewis A. Objective Structured Clinical Exams (OSCE) Are A Feasible Method of Teaching How to Discuss a Nonepileptic Seizure Diagnosis. Poster presented at NYU Langone Health's Fourth Annual Medical Education Innovations & Scholarship Day. November 20, 2019.
13. Cahan E, Hanley K, Porter B, Wallach A, Altshuler L, Gillespie C, Zabar S. Provider "Hotspotters:" Individual Residents Demonstrate Different Patterns of Test Utilization across 3 Standardized Cases. Poster presented at NYU Langone Health's Fourth Annual Medical Education Innovations & Scholarship Day. November 20, 2019.
14. Blatt B; Cook T.E; Greene R.E; Crowe, R. Peer Sexual Health History Objective Structured Clinical Examination (OSCE). Poster presented at NYU Langone Health's Fourth Annual Medical Education Innovations & Scholarship Day. November 20, 2019.
15. Zabar S, McCrickard M, Elias K, Cooke D, Hochman K, Wallach A. Setting High Standards From the Start: An Experiential Faculty Orientation to Introduce Institutional Expectations Around Communication and Patient Safety. Poster presented at NYU Langone Health's Fourth Annual Medical Education Innovations & Scholarship Day. November 20, 2019.
16. Sartori D, Horlick M, Hayes R, Adams J, Zabar S. The Virtual OSCE: Preparing Trainees to Use Telemedicine as a Tool for Transitions of Care. Poster presented at NYU Langone Health's Fourth Annual Medical Education Innovations & Scholarship Day. November 20, 2019.
17. Janjigian, M; Dembitzer, A; Srisarajivakul-Klein, C; Hardowar, K; Lusk, P; Zabar, S; Sauthoff, H. Integrated sonographic competency at NYU (I-ScaN): Program Description and early evaluation. *Journal of general internal medicine.* 2019:Conference:(2019).
18. Elias K, Kalet A, Phillips D, Manko J, Buckvar-Keltz L, Ng G, Fagan I, Cho I, Mack A, Alberson I, Riles T, Zabar S. First Night-onCall (FNOC): Establishing a community of practice and a culture of patient safety for incoming interns. International Meeting on Simulation in Healthcare (IMSH) 2020 - San Diego, CA (*Poster + Moderated Verbal Presentation*).
19. Elias K, Wallach A, McCrickard M, Cooke D, Hochman K, Zabar S. Setting high standards from the start: An experiential faculty orientation to introduce institutional expectations around communication and patient safety. International Meeting on Simulation in Healthcare (IMSH) 2020 - San Diego, CA (*Poster + Moderated Verbal Presentation*).
20. Elias K, McCrickard M, Wallach A, Hochman K, Gillespie C, Hardowar K, Zabar S. Experience does not equal expertise: New graduates outperform experienced providers on an experiential faculty onboarding experience. SGIM 2020 Conference.
21. Elias K, Kalet A, Zabar S, Ark T. Using a simulated Night-onCall to assess near-graduate readiness-for-internship. SGIM 2020 Conference.
22. Lynn M, Hayes R, Hanley K, Zabar S, Calvo-Friedman A, Wilhite J. Rapid Response Team to the Clinic Bathroom!: Can residents identify and manage opioid overdose? SGIM 2020 Conference.
23. Sartori D, Lakdawala V, Levitt H, Sherwin J, Testa P, Zabar S. Standardizing Quality of Virtual Urgent Care: An Experiential Onboarding Approach using Standardized Patient. Society for Academic Emergency Medicine (SAEM) Annual Meeting, May 2020, (*Oral Innovation presentation*).
24. Wilhite J, Zabar S, Hardowar K, Fisher H, Altshuler L, Mari A, Ansari F, Porter B, Wallach A, Hanley K, Gillespie C. Home is where the mold grows: Using Unannounced Standardized Patients to understand clinical reasoning and social determinants of health. SGIM 2020 Conference.
25. Wilhite J, Zabar S, Hanley K, Altshuler L, Fisher H, Kalet A, Hardowar K, Mari A, Porter B, Wallach A, Gillespie C. Do Providers Document Social Determinants? Our EMRs say...! SGIM 2020 Conference. (*Plenary*)
26. Zabar S, Mari A, Kulsic-Ho A, Bostwick A, Fisher H, Altshuler L, Gillespie C, Wilhite J, Hanley K, Greene R, Adams J. OSCE Case Bank Inventory 2001-2018: Programmatic Evaluation of Performance Based Assessment Case Characteristics. SGIM 2020 Conference.
27. Zabar S, Wilhite J, Hanley K, Altshuler L, Fisher H, Kalet A, Hardowar K, Mari A, Porter B, Wallach A, Gillespie C. Use of USPs and Audit/Feedback to Improve Physician Response to Social Determinants of Health. SGIM 2020 Conference.
28. Chang LY, Elias KL, Cacciatore DT, & Winkel AF (2019). The learner's perception of the transition to residency: A qualitative study of new interns' experiences. *Medical Education Innovations and Scholarship Day - New York, NY (Poster Presentation)*. *Awarded Best Graduate Medical Education Research Poster



NYSIM

THE CITY UNIVERSITY OF NEW YORK | NYU GROSSMAN SCHOOL OF MEDICINE

NYSIM@nyulangone.org
646-501-4001